

## SINGLE PASS DOUGH ROLLER

### *The Ultimate Tabletop Sheeter in the Industry*

- Sheets 500-600 pieces per hour
- Ergonomic design for safety, speed, sanitation, and ease of use
- Heavy-Duty stainless steel construction
- Simple handle adjustments for exact, uniform dough thickness
- Safety sensors for automatic shutoff
- Compact design for maximizing counter space
- Convenient side operation
- Maintenance-free drive mechanism isolated from roller area
- Spring-loaded scrapers for easy removal and cleaning

● Listed:

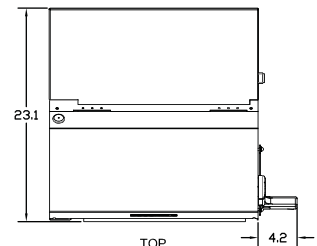
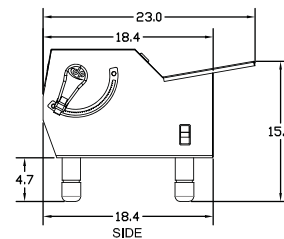
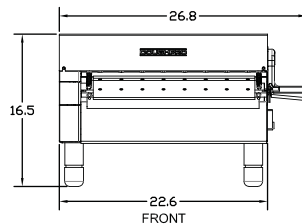


### *The Most Versatile Tabletop Sheeter*

### *Perfect For*

- Pizza Dough
- Danishes
- Dough Lamination
- Fondant
- Pie Crusts
- Yeast Raised Donuts
- Pasta Production
- Cinnamon Rolls

ON/OFF Switch	Yes	Electrical Data 115v/60hz 8.8 amps
Bearings	Sealed	
Adjustable Thickness	Yes	230v/50hz 4.4 amps
Legs	4.7"	Shipping Weight 135 lbs. / 60 kgs.
Finish	Stainless	



Includes 72" cord and NEMA plug.

*Specifications, Details and Prices are subject to change without prior notice.  
Please call for current pricing.*

### **DOUGHPRO**

20281 Harvill Ave, Perris CA 92570  
(951) 657-0379 (800) 624-6717 Fax (951) 657-4594